



# Cobra's Colleagues



12 April 2014

An un-automated aggregation of data from the Cobra's Market View Forums,  
<http://bbs.cobrasmarketview.com/index.php>

Volume 1, Issue 1

uempel

Member since 02/15/11



"Guys, this is scary, next week might be much weaker than anticipated. BPs look dreadful: BPNYA -4.32%, BPCOMPQ -3.32%, BPOEX -8.33%, BPNDX -6.67%, BPSPX -4.87%, BPINDU -4.76% and BPFINA -3.33%."

"I prefer SPX 1798 as a target for Opex-Thursday. Note too that Fib MA 144 runs through 1797"



BullBear52x

Member since 02/22/11

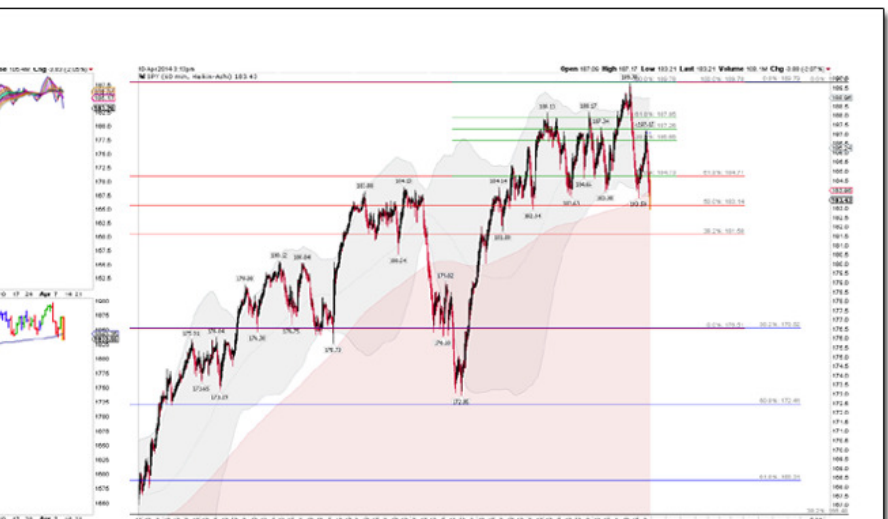
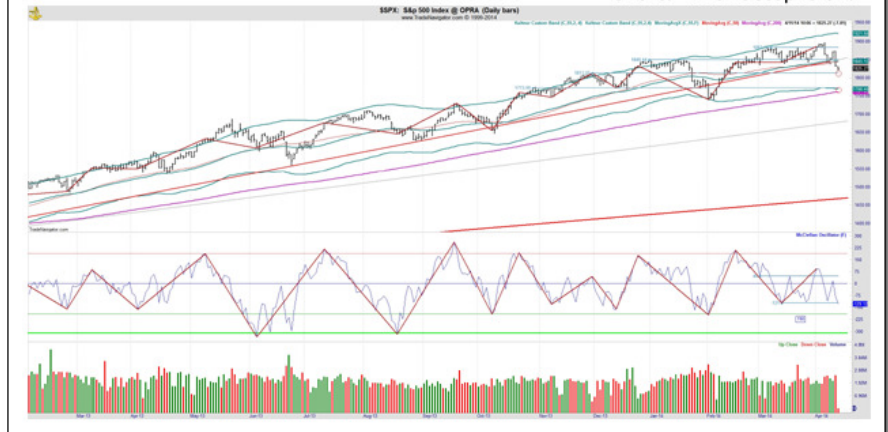
"Mid to Long term new sell the rip entry"



Mr. BachNut

Member since 02/24/11

"Short." "Profit stop is on."



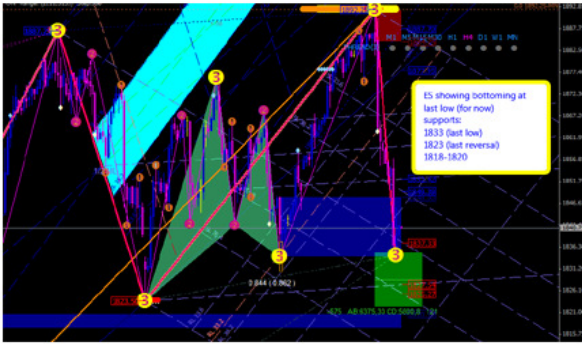




soku

Member since 03/25/11

"pattern has only 65% chance of playing out."



Al\_Dente

Member since 07/21/11



SPY "box target of about 179"

fehro

Member since 09/02/11



recent SPY p-bars: 187.10, 188.68



MrMiyagi

Member since 10/16/11



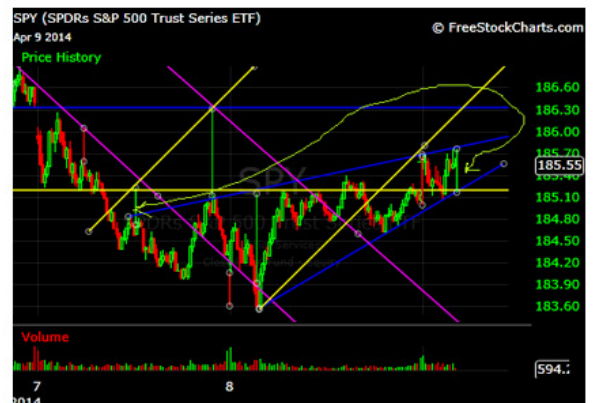
TWT

Member since 11/16/11



FlowerGirl

Member since 04/10/13





**EvilTrader**  
Member since 02/15/11

"THE BULL IS DEAD !  
THE BEAR IS DEAD !  
LONG LIVE THE TIGER !"

**Denali92**  
Member since 05/25/11

"Rare event next week - market closed for  
Good Friday so NO OPEX day trading!"

**rpccharts**  
Member since 07/29/11

"Today is wolanchuk Wednesday - wed week b4 opex  
friday - Big Boyz roll contracts and sell into today...  
then squeeze into opposite direction... so rally to fri  
opex?"

**ALdaytrade**  
Member since 04/04/13

"So, the long wave down is number 3, rebound is number 4,  
last wave to complete this series is number 5. Then we will start up."

**DellGriffith**  
Member since 08/25/13

"Action reminds me of that day where we slipped above 1890 briefly  
near the end of the day and then closed below it. Except in reverse.  
Now we slipped below 1840 and are inching up trying to close above  
it before the close."

**flumanchu**  
Member since 12/06/13

"The target for next Thursday is 1809."